

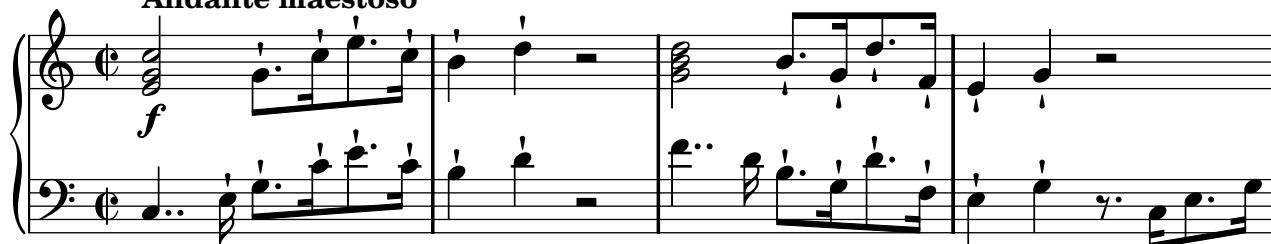
Tui sunt coeli

Offertorium, HV 78

Organo

Joseph Eybler (1765-1846)

Andante maestoso



26



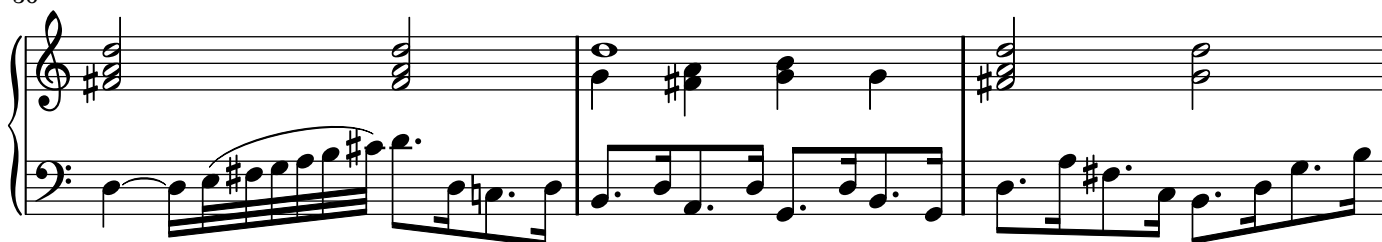
30



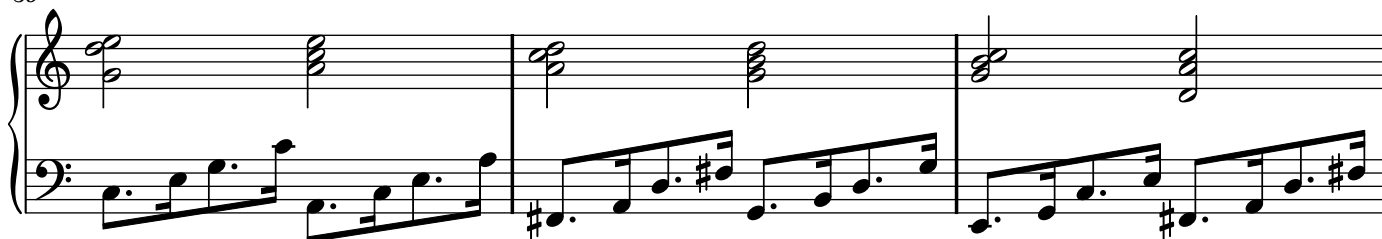
33



36



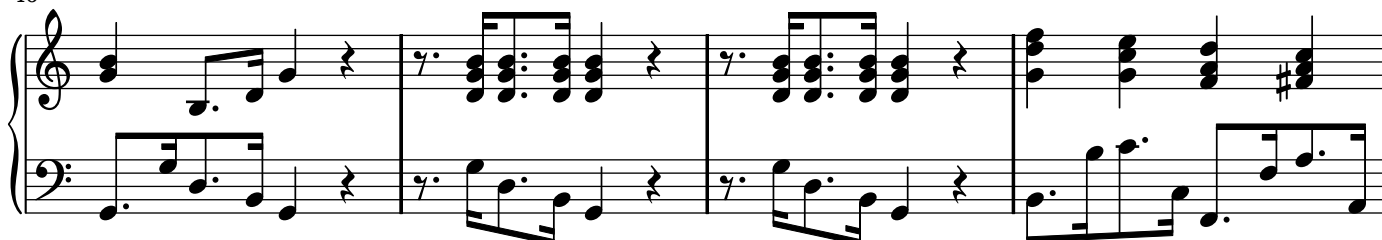
39



42



46



50

Measures 50-53. The piece is in G major. Measure 50: Treble clef has a G4 chord, bass clef has a G2-F2-E2 quarter note. Measure 51: Treble clef has a G4-A4-B4 quarter note, bass clef has a G2-F2-E2 quarter note. Measure 52: Treble clef has a G4-A4-B4 quarter note, bass clef has a G2-F2-E2 quarter note. Measure 53: Treble clef has a G4-A4-B4 quarter note, bass clef has a G2-F2-E2 quarter note. Dynamics: *f* (forte) in measure 51, *tr* (trill) in measure 52.

54

Measures 54-56. Measure 54: Treble clef has a G4-A4-B4 quarter note, bass clef has a G2-F2-E2 quarter note. Measure 55: Treble clef has a G4-A4-B4 quarter note, bass clef has a G2-F2-E2 quarter note. Measure 56: Treble clef has a G4-A4-B4 quarter note, bass clef has a G2-F2-E2 quarter note. Dynamics: *sfp* (sforzando) in measure 56.

57

Measures 57-59. Measure 57: Treble clef has a G4-A4-B4 quarter note, bass clef has a G2-F2-E2 quarter note. Measure 58: Treble clef has a G4-A4-B4 quarter note, bass clef has a G2-F2-E2 quarter note. Measure 59: Treble clef has a G4-A4-B4 quarter note, bass clef has a G2-F2-E2 quarter note. Dynamics: *cresc.* (crescendo) in measure 59.

60

Measures 60-63. Measure 60: Treble clef has a G4-A4-B4 quarter note, bass clef has a G2-F2-E2 quarter note. Measure 61: Treble clef has a G4-A4-B4 quarter note, bass clef has a G2-F2-E2 quarter note. Measure 62: Treble clef has a G4-A4-B4 quarter note, bass clef has a G2-F2-E2 quarter note. Measure 63: Treble clef has a G4-A4-B4 quarter note, bass clef has a G2-F2-E2 quarter note. Dynamics: *f* (forte) in measure 60, *ff* (fortissimo) in measure 61.

64

Measures 64-68. Measure 64: Treble clef has a G4-A4-B4 quarter note, bass clef has a G2-F2-E2 quarter note. Measure 65: Treble clef has a G4-A4-B4 quarter note, bass clef has a G2-F2-E2 quarter note. Measure 66: Treble clef has a G4-A4-B4 quarter note, bass clef has a G2-F2-E2 quarter note. Measure 67: Treble clef has a G4-A4-B4 quarter note, bass clef has a G2-F2-E2 quarter note. Measure 68: Treble clef has a G4-A4-B4 quarter note, bass clef has a G2-F2-E2 quarter note. Dynamics: *f* (forte) in measure 68.

69

Measures 69-72. Measure 69: Treble clef has a G4-A4-B4 quarter note, bass clef has a G2-F2-E2 quarter note. Measure 70: Treble clef has a G4-A4-B4 quarter note, bass clef has a G2-F2-E2 quarter note. Measure 71: Treble clef has a G4-A4-B4 quarter note, bass clef has a G2-F2-E2 quarter note. Measure 72: Treble clef has a G4-A4-B4 quarter note, bass clef has a G2-F2-E2 quarter note. Dynamics: *fz* (forzando) in measures 70 and 72, *tr* (trill) in measures 71 and 72.

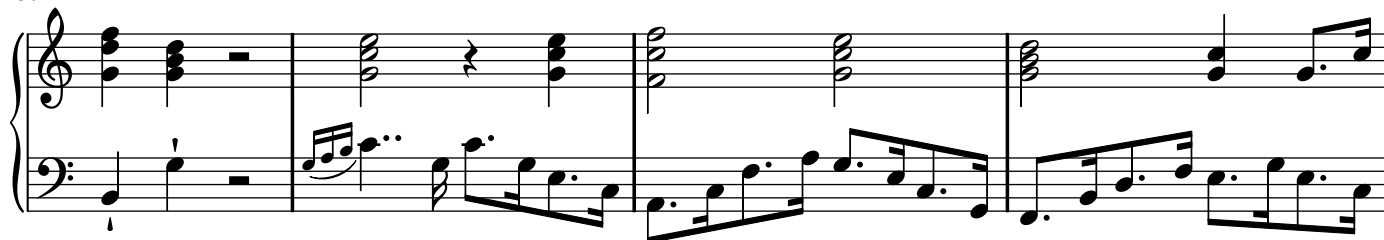
73

Measures 73-75. Measure 73: Treble clef has a G4-A4-B4 quarter note, bass clef has a G2-F2-E2 quarter note. Measure 74: Treble clef has a G4-A4-B4 quarter note, bass clef has a G2-F2-E2 quarter note. Measure 75: Treble clef has a G4-A4-B4 quarter note, bass clef has a G2-F2-E2 quarter note.

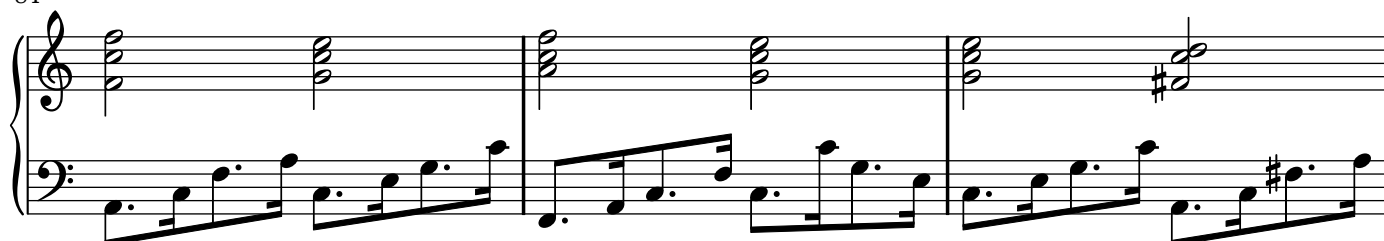
76



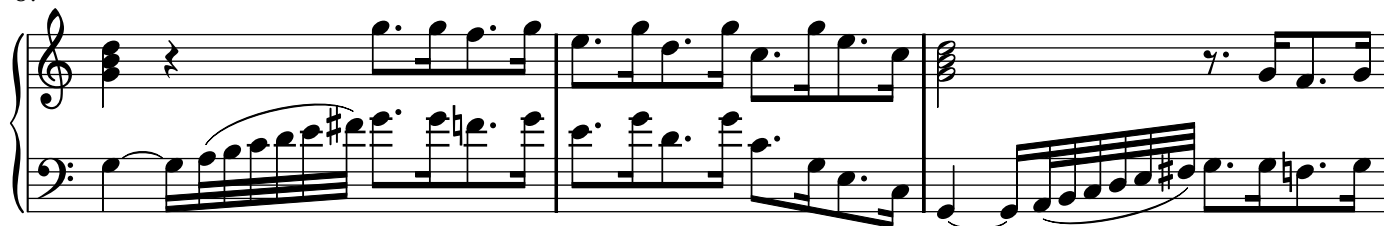
80



84



87



90



93



96



99

Measures 99-102. The music is in G major. The right hand features chords and eighth-note patterns, while the left hand plays a steady eighth-note accompaniment.

103

Measures 103-106. Measure 104 includes a forte (*f*) trill in the right hand. Measure 106 includes a trill in the right hand.

107

Measures 107-110. Measure 109 includes a sforzando (*sfp*) dynamic marking in the right hand.

110

Measures 110-112. Measure 112 includes a crescendo (*cresc.*) marking in the right hand.

113

Measures 113-116. Measure 114 includes a fortissimo (*ff*) dynamic marking in the right hand.

117

Measures 117-119. The music continues with eighth-note patterns in both hands.

120

Measures 120-123. Measures 122 and 123 feature triplet markings (*3*) in both hands.